

7. SINIF

İNGİLİZCE TESTİ -7



1. I. Then, sort them.
II. Finally, make new products.
III. First, collect the waste materials in the recycling bins.
IV. Next, remanufacture the wastes.

Which of the following is the correct order?

- A) I-II-IV-III
- B) III-I-IV-II
- C) III-IV-I-II
- D) I-III-IV-II

2. Tina: Why are scientists worried about global warming?
Tom: -----.

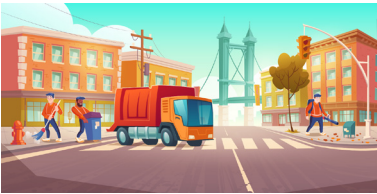
Which of the following completes the blank best?

- A) Because it causes climate change.
- B) Because it is important to stop destroying rainforest.
- C) Because it is useful to save energy.
- D) Because it is a poisonous chemical.

3. Teacher: What should we do to protect the environment?
Lisa: We must keep the streets clean.
Mary: We must use public transportation.
Tim: We must plant more trees.
Mike: We must use renewable energies.

Which picture does NOT match with the sentences?

A)



B)



C)



D)



7. SINIF

İNGİLİZCE TESTİ -7



4. Nitrogen and oxygen are - - - - - elements for our life because they - - - - - most of Earth's atmosphere.

- A) the most important/form
- B) more important than/observe
- C) important than/launch
- D) most important /consist

5. football / the most / Mbappe / is / player / talented
1 2 3 4 5 6

Put the words in the correct order to make a meaningful sentence.

- A) 3-6-2-4-5-1
- B) 3-5-4-6-1-2
- C) 3-4-2-6-1-5
- D) 3-4-1-2-6-5

6. Answer the question according to the table below.

Planet	Earth	Saturn
Average Temperature	16 C	-202 C

Saturn is - - - - -than Earth

- A) hotter
- B) colder
- C) closer
- D) larger

7. SINIF

İNGİLİZCE TESTİ-7

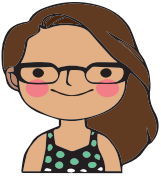


7. Jupiter is - - - - - planet in the solar system.

- A) the biggest
- B) bigger
- C) the smallest
- D) smaller

8. Scientists send - - - - - to observe and search planets.

- A) meteors
- B) shuttles
- C) stars
- D) telescopes



Alice

That planet is the most important planet. It has water and oxygen so, people can live on it.

9. Which planet is Alice talking about?

- A) Mercury
- B) Mars
- C) Earth
- D) Uranus

7. SINIF

İNGİLİZCE TESTİ -7



10. Look at the dialogue and answer the question.



Aslı: People should use eco-friendly products.

Emily: Why do you think so?

Aslı: -----.

Emily: You're right. We should take action as soon as possible.

Which of the following is CORRECT according to the dialogue?

- A) Because they pollute the water and air.
- B) People use solar energy
- C) To protect their environment.
- D) Because they do not harm to the environment.

11. Read the sentences and answer the question.



Aslı: I am thinking about starting a campaign about pollution.

Melisa: Great idea! Our planet is getting dirtier every day and we should do something.

Aslı: Firstly , -----

Mert: Then , we should deliver them to the people.

Melisa: Next, we should organize events. For example; ' A Recycling Day '.

Aslı: Finally, we can give presents to people when they bring waste materials.

Mert: That sound great! Let's start !

Fill in the blank with the correct sentence.

- A) We must stop deforestation.
- B) We can buy eco- friendly products.
- C) We should prepare brochures about pollution.
- D) We should use less electricity.

7. SINIF

İNGİLİZCE TESTİ-7



12. Read the speech bubbles and answer the questions.

The teacher Mrs. Dannison asks her students how to protect the environment. Here are the students answers.



What must we do to protect our environment ?

We must recycle waste materials.

CAROL

We must turn off the lights when we don't use it.

ADAM

We must use renewable energy sources.

MARGARET

We must use public transportation instead of our own cars.

DAVID

Whose answer is related to the air pollution?

- A) Margaret
- B) David
- C) Adam
- D) Carol

YAYIN KURULU

Eyüp ZENGİN	Ahmet Yesevi Ortaokulu
Fadime Mert	İMKB Karaacadağ Ortaokulu
Ferit YAŞAN	Şehit Ömer Halis Demir Anadolu Lisesi
Mahmut ÖZALP	Çelebi Eser Ortaokulu

1. B 2. A 3. C 4. D 5. C 6. B 7. A 8. B 9. C 10. D 11. C 12. B